

MODEL NO. ATX1585/1510/1512

This specification describes the requirements of 850W,1000W,1200W Watts switching power supply with an stretch ATX form-factor and EPS 12V, +5V standby voltage, remote on/off control, full range line input capability and forced air cooling characteristics.

1. AC INPUT**1.1 AC input requirements**

The input voltage, current, and frequency requirements for continuous operation are stated below.

Table 1 AC Input Line Requirements

Parameter	Min.	Nom.	Max.	Unit
Vin(Full range)	90	100---240	264	VACrms
Vin Frequency	47	60-----50	63	Hz
Iin(850W)		11-----5.5		Arms
Iin(1000W)		12-----6		Arms

Table 2 AC Input Line Requirements

Parameter	Min.	Nom.	Max.	Unit
Vin(Full range)	103	115---240	264	VACrms
Vin Frequency	47	60-----50	63	Hz
Iin(1200W)		12-----6		Arms

Power factor correction (PF)>0.90 at full load.

The power supply must meet inrush requirements for any rated AC voltage, during turn on at any phase of AC voltage, during a single cycle AC dropout condition, during repetitive ON/OFF cycling of AC, and over the specified temperature range (Top). The peak inrush current shall be less than the ratings of its critical components (including input fuse, bulk rectifiers, and surge limiting device).

2. DC OUTPUT**2.1 DC voltage regulation**

Parameter	Range	Min	Nom.	Max	Unit
+3.3V	+/-5%	+3.14	+3.30	+3.47	Volts
+5V	+/-5%	+4.75	+5.00	+5.25	Volts
+12V	+/-5%	+11.40	+12.00	+12.60	Volts
-12V	+/-10%	-13.2	-12.00	-10.8	Volts
+5VSB	+/-5%	+4.75	+5.00	+5.25	Volts

Note:1>Voltage tolerance is required at main connector and S-ATA connector(if used)

2.2 Load ranges

2.2.1:(850 Watts Load Range)

Parameter	Min(optional)	Nom.	Max	Peak	Unit
+3.3V	0.1	-	25		Amps
+5V	0.2	-	22		Amps
+12V	0.15	-	70		Amps
-12V	0	-	0.3		Amps
+5VSB	0	-	2.5		Amps

- 1.Maximum continuous total DC output power should not exceed 850W.
- 2.Maximum continuous combined load on +3.3V and +5V outputs shall not exceed 120W.
- 3.Maximum combined current for the +12V outputs shall be 70A(840W).
- 4.Peak DC output power should not exceed **900W for 12 second**.

2.2.2:(1000 Watts Load Range)

Parameter	Min(optional)	Nom.	Max	Peak	Unit
+3.3V	0.1	-	25		Amps
+5V	0.2	-	25		Amps
+12V	0.15	-	83		Amps
-12V	0	-	0.3		Amps
+5VSB	0	-	3.5		Amps

- 1.Maximum continuous total DC output power should not exceed 1000W.
- 2.Maximum continuous combined load on +3.3V and +5V outputs shall not exceed 150W.
- 3.Maximum combined current for the +12V outputs shall be 83A(996W).
- 4.Peak DC output power should not exceed **1050W for 12 second**.

2.2.3:(1200 Watts Load Range)

Parameter	Min(optional)	Nom.	Max	Peak	Unit
+3.3V	0.1	-	25		Amps
+5V	0.2	-	25		Amps
+12V	0.15	-	100		Amps
-12V	0	-	0.3		Amps
+5VSB	0	-	3.5		Amps

- 1.Maximum continuous total DC output power should not exceed 1200W.
- 2.Maximum continuous combined load on +3.3V and +5V outputs shall not exceed 150W.
- 3.Maximum combined current for the +12V outputs shall be 100A(1200W).
- 4.Peak DC output power should not exceed **1250W for 12 second**.

2.3 Output Ripple

2.3.1 Ripple regulation

Parameter	Ripple&Noise	Unit
+3.3V	50	mVp-p
+5V	50	mVp-p
+12V	120	mVp-p
-12V	120	mVp-p
+5VSB	50	mVp-p

2.3.2 Definition

The ripple voltage of the outputs shall be measured at the pins of the output connector when terminated in the load impedance specified in figure 1. Ripple and noise are measured at the connectors with a 0.1uF ceramic capacitor and a 10uF electrolytic capacitor to simulate system loading. Ripple shall be measured under any condition of line voltage, output load, line frequency, operation temperature.

2.3.3 Ripple voltage test circuit

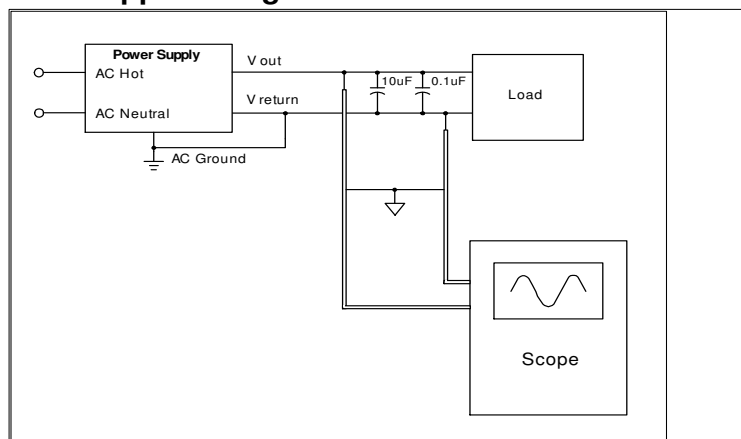


Figure 1. Ripple voltage test circuit

2.4 Overshoot

Any overshoot at turn on or turn off shall be less 10% of the nominal voltage value, all outputs shall be within the regulation limit of section 2.0 before issuing the power good signal of section 5.0.

2.5 Efficiency

Power supply efficiency typical **87% / 20% Load, 90% / 50% Load, 87% / 100% Load** at normal AC main voltage.

2.6 Remote ON/OFF control

When the logic level "PS-ON" is low, the DC outputs are to be enabled.

When the logic level is high or open collector, the DC outputs are to be disabled.

3.0 PROTECTION

3.1 Over current protection

The power supply shall have current limit to prevent the +3.3V,+5V,and +12V outputs from exceeding the values shown in the following Table. If the current limits are exceeded the power supply shall shutdown and latch off.

850W

Voltage	Over Current Limit (lout limit)
+12V	85A minimum; 120A maximum
+5V	25A minimum; 50A maximum
+3.3V	25A minimum; 50A maximum

1000W

Voltage	Over Current Limit (lout limit)
+12V	90A minimum; 130A maximum
+5V	25A minimum; 50A maximum
+3.3V	25A minimum; 50A maximum

1200W

Voltage	Over Current Limit (lout limit)
+12V	120A minimum; 150A maximum
+5V	25A minimum; 50A maximum
+3.3V	25A minimum; 50A maximum

3.2 Over-power protection

The power supply will be shutdown and latch off when output power within 105~150% of rated DC output.

Note: Assurance machine can work at low voltage, full load won't damage machine.

3.3 Under voltage protection.

In an under voltage fault occurs, the supply will latch all DC outputs into a shutdown state when +12V,+5V & +3.3V outputs under 85% of it's maximum value.

3.4 Over voltage protection

The over voltage sense circuitry and reference shall reside in packages that are separate and distinct from the regulator control circuitry and reference. No single point fault shall be able to cause a sustained over voltage condition on any or all outputs. The supply shall provide latch-mode over voltage protection as defined in Table.

output	Minimum	Nominal	Maximum	Unit
+12 VDC	13	15	17	Volts
+5 VDC	5.5	6	7	Volts
+3.3 VDC	3.6	4	5	Volts

3.5 Short circuit

An output short circuit is defined as any output impedance of less than 0.1 ohms. The power supply shall shut down and latch off for shorting the +3.3 VDC,+5 VDC,or+12 VDC rails to return or any other rail. Shorts between main output rails and +5VSB shall not cause any damage to the power supply. The power supply shall either shut down and latch off or fold back for shorting the negative rails.+5VSB must be capable of being shorted indefinitely, but when the short is removed,the power supply shall recover automatically or by cycling PS_ON#. The power supply shall be capable of withstanding a continuous short-circuit to the output without damage or overstress to the unit

3.6 No load operation

No damage or hazardous condition should occur with all the DC output connectors disconnected from the load. The power supply may latch into the shutdown state.

4. TIMING

4.1 Signal timing drawing

Figure 2. is a reference for signal timing for main power connector signals and rails.

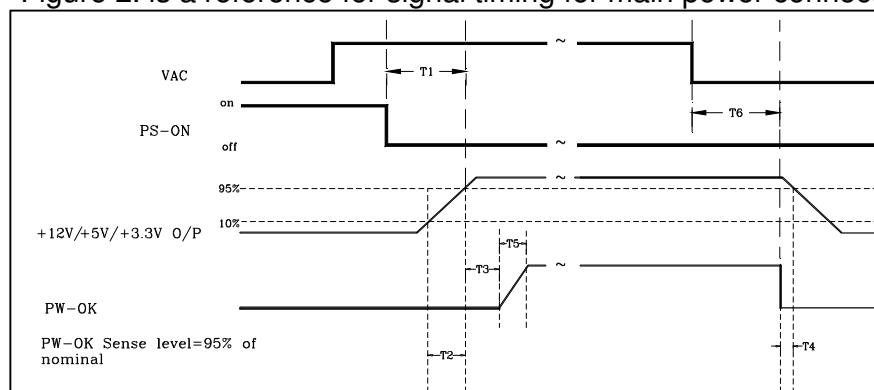


Figure 2. PS-OK Timing Sequence

- (1) T3: Power good signal turn on delay time (100ms~500ms)
- (2) T2: Rise time (0.1~20ms)
- (3) T6: Hold up time (75%Load 16ms)

4.2 Hold up time

When the power loss its input power, it shall maintain **16ms** in regulation limit at normal input voltage and 75% full load (AC:115V/60Hz or 230V/50Hz)

5. ENVIRONMENT

5.1 Operation

Temperature	0 to 40°C
Relative Humidity	10 to 90%, non-condensing

5.2 Shipping and Storage

Temperature	-20 to 90°C
Relative Humidity	5 to 95%, non-condensing

5.3 Altitude

Operating	2000m
Storage	3000m

6. SAFETY

6.1 Underwriters Laboratory (UL) recognition.

The power supply designed to meet UL 60950.

7. ELECTROMAGNETIC COMPATIBILITY (EMC)

7.1 ELECTROSTATIC DISCHARGE (ESD) – IEC 61000-4-2(EN 61000-4-2).

7.2 RADIATED SUSCEPTIBILITY – IEC 61000-4-3(EN 61000-4-3).

7.3 ELECTRICAL FAST TRANSIENT / BURST (EFT/B) – IEC 61000-4 -4(EN 61000-4-4).

7.4 SURGE – IEC 61000-4-5(EN 61000-4-5).

7.5 CONDUCTED SUSCEPTIBILITY – IEC 61000-4-6(EN 61000-4-6).

7.6 POWER FREQUENCY MAGNETIC FIELD – IEC 61000-4-8(EN 61000-4-8).

7.7 VOLTAGE DIPS – IEC 61000-4-11(EN 61000-4-11).

7.8 VOLTAGE FLUCTUATIONS – IEC 61000-3-3 (EN 61000-3-3).

7.9 HARMONIC CURRENT EMISSION – IEC61000-3-2(EN 61000-3-2).

7.10 EN55032:Class B Radio interference (CISPR 22).

7.11 ANSI C63.4-2009 / FCC Part 15 Subpart B / ICES-003 Issue 5 Class B 115VAC operation.

8. MTBF

8.1 MTBF (mean time between failures) calculation

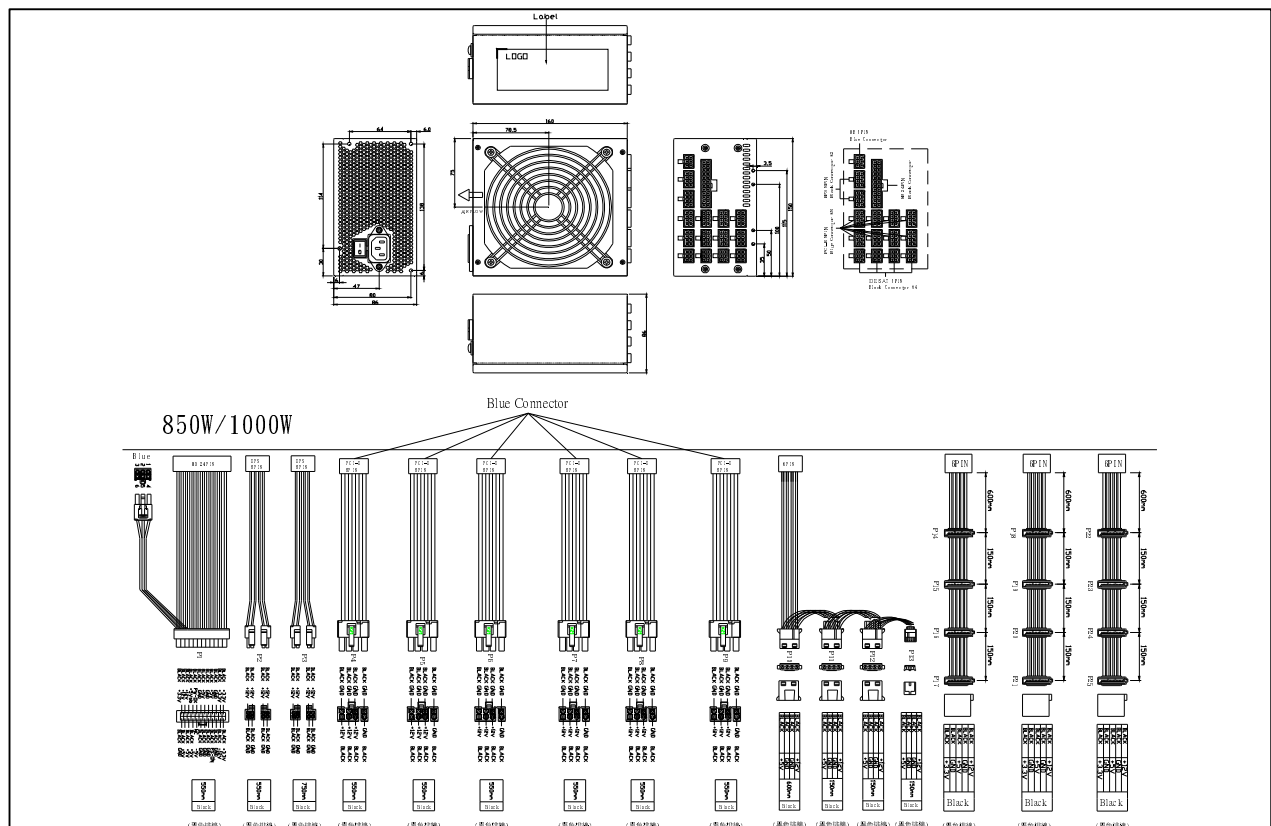
The demonstrated MTBF shall be 100,000 hours of continuous operation at 25°C,at 80% load, and nominal line. The MTBF of the power supply be calculated in accordance with MIL-HDBK-217I
The DC FAN is not included.

9. MECHANICAL REQUIREMENTS

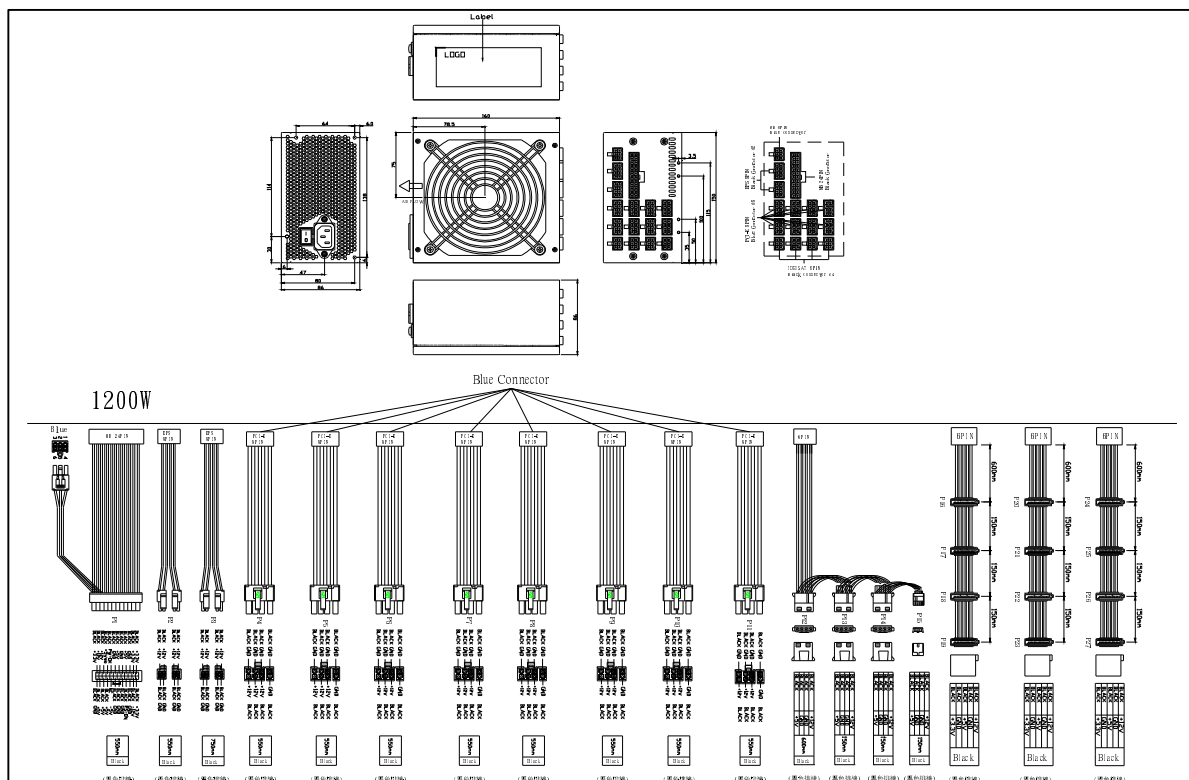
9.1 Physical dimension (L160mm*W150mm*H86mm)

(線材組合&外露長度僅供參考，可根據客戶要求更改或新增。)

850W/1000W



1200W



AUDIT: _____ CHECK: _____ DESIGN: _____

9.2 Connectors (INTEL approved or equivalent)

P1 24PIN : Molex 44476-1111 or equivalent

18AWG wire	Signal	Pin	Pin	Signal	18AWG wire
Black	+3.3V	13	1	+3.3V	Black
Black(22AWG)	+3.3Vsense				
Black	-12V	14	2	+3.3V	Black
Black	GND	15	3	GND	Black
		15	3	GNDsense	Black(22WAG)
Black	PS-ON	16	4	+5VDC	Black
				+5Vsense	Black(22WAG)
Black	GND	17	5	GND	Black
		17	5	GNDsense	Black(22WAG)
Black	GND	18	6	+5VDC	Black
Black	GND	19	7	GND	Black
		19	7	GNDsense	Black(22WAG)
Black	NC	20	8	PW-OK	Black
Black	+5V	21	9	+5Vsb	Black
Black	+5V	22	10	+12V	Black
		22		+12Vsense	Black(22WAG)
Black	+5V	23	11	+12V	Black
Black	GND	24	12	+3.3V	Black
Black	+12V	4	2	GND	Black

P4,P5,P6,P7,P8,P9,P10,P11 PCI (6+2)PIN ((6+2)PIN:Molex AP102XN8T1-204X-RS1 or equivalent)

18AWG wire	Signal	Pin	Pin	Signal	18AWG wire
Black	+12V	1	4	GND	Black
Black	+12V	2	5	GND	Black
Black	+12V	3	6	GND	Black
Black	GND	1	2	GND	Black

P12,P13,P14大4PIN(AMP 1-480424-0 or Molex 8981-04P or equivalent)**P15小4PIN(AMP 171822-4 or equivalent)**

18 AWG wire	Signal	Pin	Pin	Signal	22AWG wire
Black	+12V	1	1	+12V	Black
Black	GND	2	2	GND	Black
Black	GND	3	3	GND	Black
Black	+5VDC	4	4	+5VDC	Black

P16,P17,P18,P19,P20,P21,P22,P23,P24,P25,P26,P27

SATA Power Connector (Molex* 88751 or equivalent)(optional)

18AWG wire	Signal	Pin
Black	+3.3V	5
Black	GND	4
Black	+5VDC	3
Black	GND	2
Black	+12V	1

10. FAN SPEED CONTROL

Fan voltage varies with the ambient temperature or output power.